



Simon Gudgeon



kinetics



---

# Introduction

I like to have a diverse practice; the challenge of new ideas and new subjects is always inspiring and keeps my work fresh. As an artist I do not want to be compartmentalised as a 'wildlife artist', an 'abstract artist' or a 'figurative artist'; instead I want the freedom to look at new subjects and new techniques and create art that people can respond to. All my work does, however, have a common theme; they are explorations in abstraction and form; expressions of beauty that appeals to the senses. However the work must have a vitality and emotional appeal beyond that. That appeal must be independent of the object it represents and beyond the element of pure beauty. The object is just a medium for conveying that vitality and emotion.

My fascination with kinetic sculpture began when I saw the work of Alexander Calder and George Rickey, and in many ways these sculptures are a tribute to those great masters of the art. I found the gentle movement of the sculptures to be mesmerizing and was fascinated by the potential of kinetic art. I wanted to create work that had a similar effect and along the way I have learnt so many new skills and techniques. I am grateful to all those who took the time to answer my simple questions, explain possibilities and show me how to work with metal.

Having worked with bronze all my sculpting career I wanted to continue with that versatile metal, using new patination chemicals to create beautiful colours. I also wanted to refine the designs so that the joints and connections reflected the shape of the sculpture, so the whole piece was cohesive and harmonious.

Most sculptures are rigid forms; they have a sense of permanence, which reflects our view of the world. However, our world and our universe are in a constant state of flux; unexpected events can change our lives and our environment.

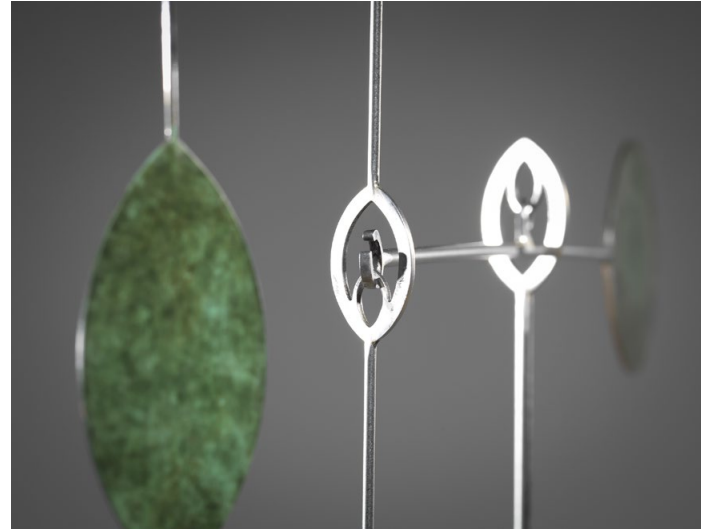
In this series of new sculptures I have been exploring movement and the purity of the abstract form. At rest, the sculptures are elegant; they are a delicate exploration of the beauty of pure abstraction. Yet the unseen forces of nature can change that order to a series of random and unpredictable movements. Fluctuating air currents will move the elements of the sculptures in an infinite number of erratic ways that appear to defy logic, gravity and the laws of physics. They immerse the viewer as he attempts to impose logic and order to the unpredictable pattern of

movement, much as we try and impose order and logic to the random nature of our lives. They reflect the human condition, which is why we relate to them.

To compliment the physical movement there is the optical motion as light reflects off the faces of the sculpture and the face of each element reflects the surrounding environment. These are sculptures of infinite physical and optical variations.

Kinetic sculpture creates a respite from the insistent demands of modern life; it is art that the viewers can immerse themselves in; art that appeals to their emotions, from the delight of a sudden movement to the apprehension of imminent disintegration, from stability to collapse; art that has grace and a hypnotic allure; the beauty of poetic thoughts and the choreography of erratic movement. Unlike my previous sculptures where each piece was cast as part of an edition the sculptures in the kinetic range are individually made, although in some cases the bases are cast. Because of this I am not producing them in editions, each piece is unique; hand made in my studio. Consequently each sculpture is numbered consecutively, depending upon when it was made rather than it's similarity to a previous piece.

Simon Gudgeon



Simon  
Gudgeon

Tel: 07779 712298

[simongudgeon@me.com](mailto:simongudgeon@me.com)

[www.simongudgeon.com](http://www.simongudgeon.com)

[www.sculpturebythelakes.co.uk](http://www.sculpturebythelakes.co.uk)

---

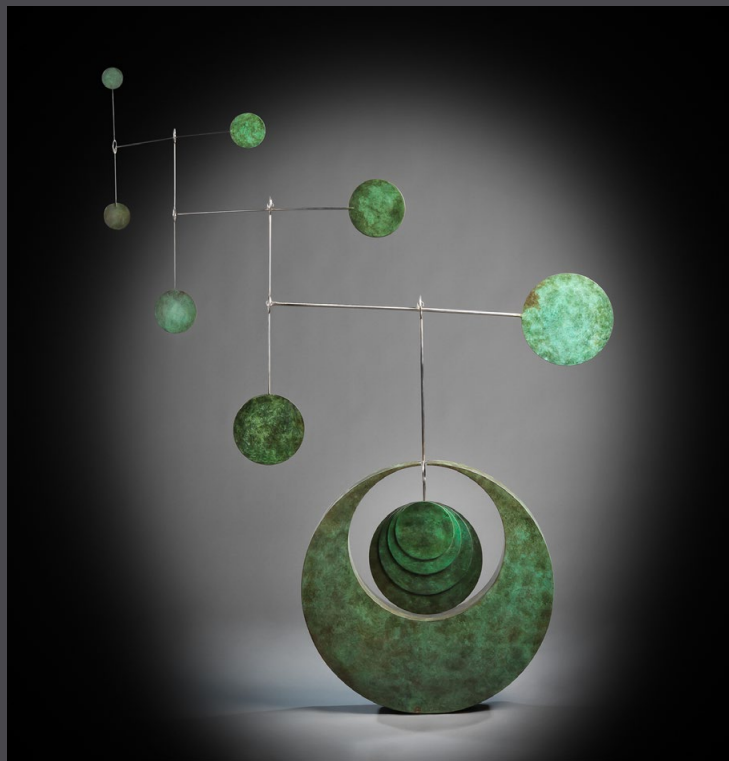
# No. 1 Disappearing Worlds

---

**No. 1**

Bronze & Stainless Steel

140 x 112 x 100cm  
55 x 44 x 4 inches



---

# No. 2 Falling Leaves

---

**No. 2**

Bronze & Stainless Steel

117 x 80 x 14cm

46 x 31 x 5 1/2 inches



---

# No. 3 Fibonacci Blue

---

**No. 3**

Bronze & Stainless Steel

148 x 150 x 6cm

58 x 59 x 2 inches



---

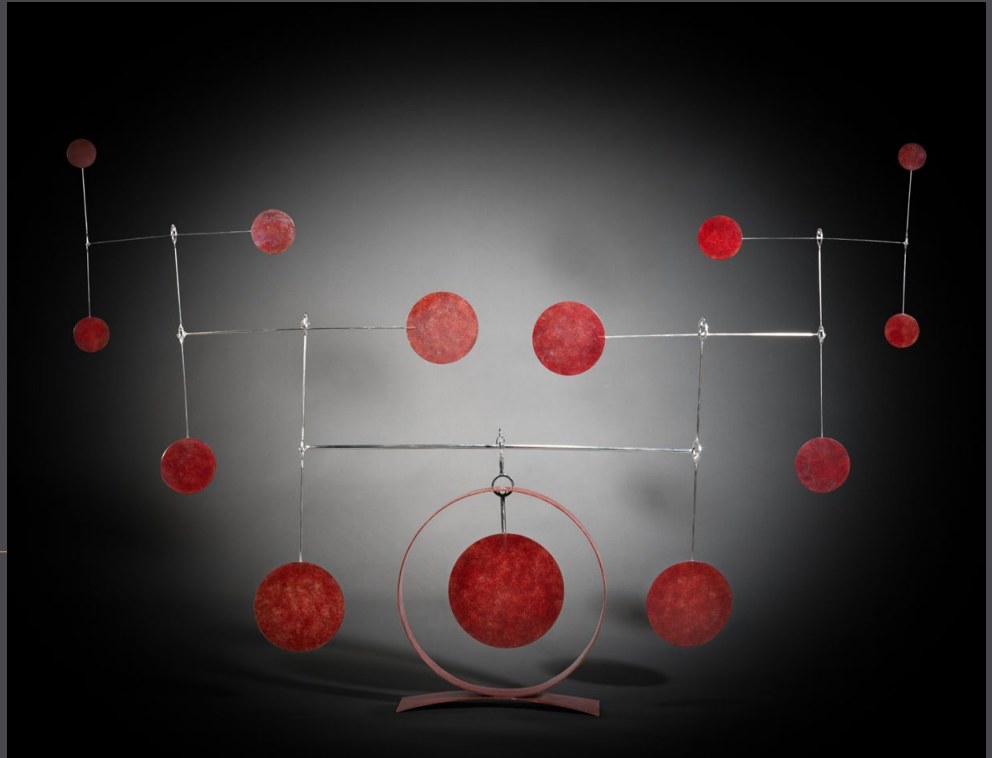
# No. 12 Balance

---

**No. 12**

Bronze & Stainless Steel

100 x 135 x 10cm  
39 x 53 x 4 inches





---

# No. 15 Tower

---

**No. 15**

Bronze & Stainless Steel

117 x 30 x 17cm

46 x 12 x 6 inches



---

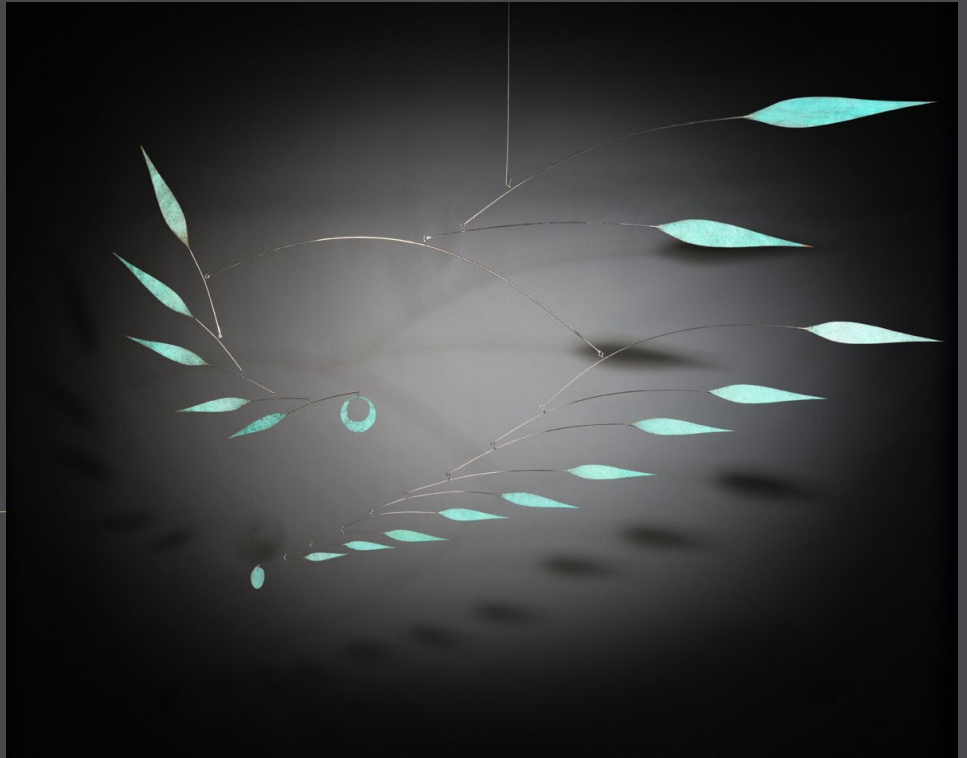
# No. 19 Phragmites I

---

**No. 19**

Bronze & Stainless Steel

120 x 160cm  
47 x 63 inches



---

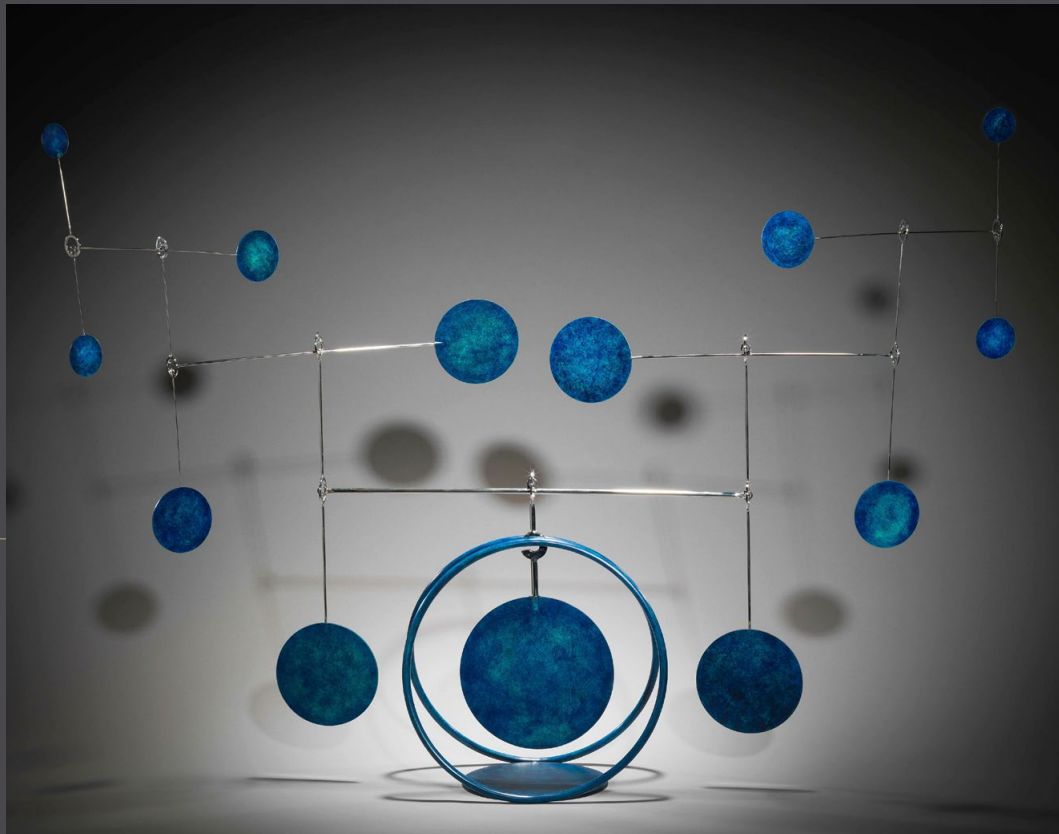
# No. 23 Libra

---

**No. 23**

Bronze & Stainless Steel

97 x 135 x 22 cm  
38 x 53 x 9 inches



---

No. 27

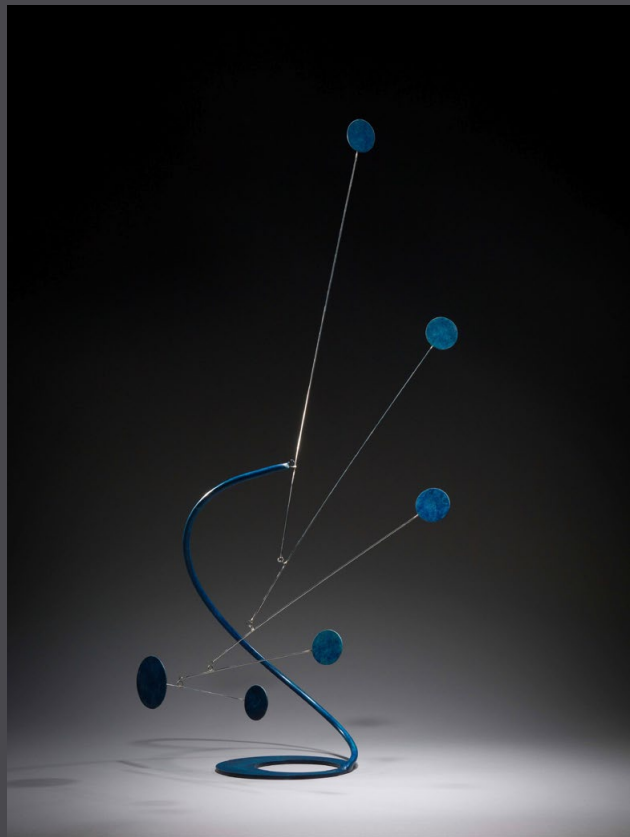
---

**No. 27**

Bronze & Stainless Steel

71 x 40 x 23cm

28 x 16 x 9 inches



---

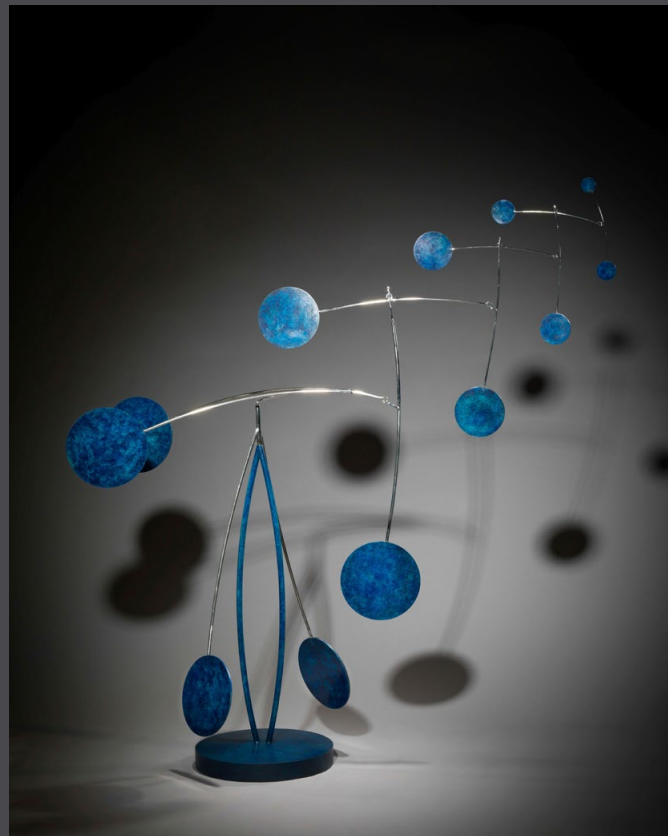
# No. 31 Tempesta

---

**No. 31**

Bronze & Stainless Steel

150 x 140 x 140cm  
60 x 56 x 56 inches



---

No. 32

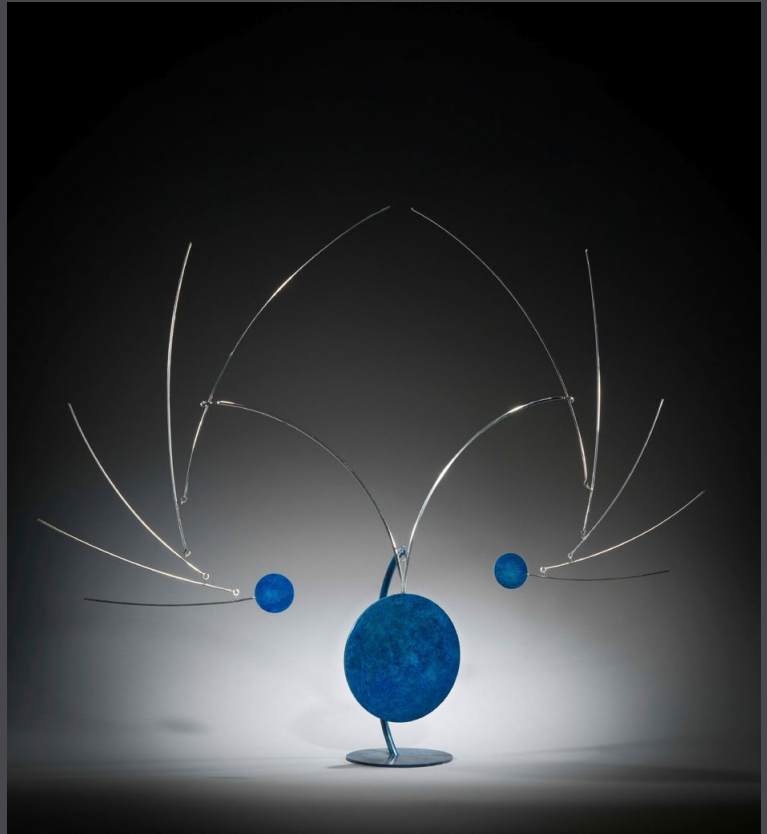
---

No. 32

Bronze & Stainless Steel

86 x 112 x 17cm

34 x 44 x 7 inches



---

# Simon Gudgeon b. 1958

One of Britain's leading contemporary sculptors, Simon Gudgeon has a signature smooth style that marvelously concentrates spirit and nature. His minimalist, semi-abstract forms depict both movement and emotion of a moment captured with a visual harmony that is unmistakably his own.

Born in Yorkshire in 1958, Gudgeon 'lived deep in the countryside on the family farm, learning the essential arts of observation, evaluation and interpretation of how animals and birds behave, both with each other and man'. After studying law at Reading University, he practiced as a solicitor, starting painting only in his thirties and first exhibiting at London's Battersea Exhibition Centre in 1992. An impulse purchase of artist's clay at the age of 40 led into his new career as a sculptor, responding to what lay closest to his heart: the natural world.

Since then Gudgeon has attained worldwide recognition, with exhibitions in London, New York, San Diego, Paris and the Netherlands. His works are featured in important private collections abroad and in the United Kingdom, including those of His Royal Highness The Duke of Edinburgh, The Duke of Bedford and The Duke of Northumberland. In addition, he has work in the permanent collection of several prominent art museums in the USA, including America's National Museum of Wildlife Art and the Leigh Yawkey

Woodson Art Museum.

Gudgeon's sculpture park, 'Sculpture by the Lakes' at Pallington in Dorset, provides a tranquil backdrop for his monumental finished pieces and houses convenient studio workshops. Hinting at how the creative process unfolds for him, he explains, 'Most sculptures don't start out as a conscious thought, with all the aspects of form and meaning carefully considered. What happens is that an idea enters my mind - be it a shape, a movement or an emotion - and I simply want to convey it. I must convey it! Ideas come from a combination of observations, thoughts, beliefs and the profound experiences of one's life.'

Gudgeon sculpts primarily in bronze, and occasionally in marble, granite, glass or stainless steel. For the modeling of the form, he uses a number of different materials, depending on the nature and scale of the subject - terracotta clay, oil-based Chavant clay, epoxy resin or foam. Working directly from nature and live subjects, he crafts sculptures that share an elemental kinship of identity with all living things. He is particularly known for his sculptures of birds in flight, often with ingeniously engineered bases that seem to launch them into the air rather than anchor them to the ground.

---

Trips to Africa, Asia and Australasia have enabled Gudgeon to broaden his subject matter and experiment with a variety of styles and methods. His pared-down approach to sculpture embodies the flowing line of the skeleton, turning it into 'something abstract, taking away more and more information, but ... maintaining the inherent tactile core, so the form is still identifiable'. Using the smallest of details, such as the arching of a neck, he suggests rather than depicts a bird or mammal.

In 2009, Gudgeon's sculpture Isis was installed in Hyde Park, London, the first such installation there for over 50 years. With the support of Halcyon Gallery and the artist, the Isis project has raised more than £1.4 million for The Royal Parks Foundation to fund a new, environmentally friendly children's education centre – The Look Out – in the heart of the park. HRH the Prince of Wales was presented with an Isis sculpture in 2011, which is proudly displayed in the family's Japanese gardens at Highgrove House, their private residence in Gloucestershire.

Gudgeon was selected as the Featured Artist for the 2010 Western Visions exhibition at the National Museum of Wildlife Art, Jackson Hole, Wyoming. In 2010, he also exhibited his work in numerous shows including Birds in Art at the Leigh Yawkey Woodson Art Museum, Wausau, Wisconsin, and Art and the Animal, the fiftieth anniversary

exhibition of the Society of Animal Artists, at the San Diego Natural History Museum, California. In July 2012, Gudgeon will unveil Isis at America's National Museum of Wildlife Art, located in Jackson Hole, Wyoming. While staying in America, he will also take up a short term artist's residency with the Museum.

Showcasing at Halcyon Gallery, London in 2011, Gudgeon unveiled his new monumental sculpture: Search for Enlightenment. Inspired while travelling in Africa, the piece outlines the profile of two large human heads, a male and a female, cast in bronze and placed next to each other. Their expressions are peaceful and contemplative; understanding and accepting of their place in the universe. The form of the sculpture allows the viewer to look through them, which incorporates their existence within the surrounding landscape. On 13 July 2011, in celebration of HRH The Duke of Edinburgh's 90th Birthday, as well as his outstanding contributions to The World Fellowship, HRH was presented with Gudgeon's Search for Enlightenment at the annual awards dinner at Buckingham Palace. To culminate this sculpture's success, it was installed at Millbank, London in October 2011 next to the Tate Britain, and will be exhibited as part of the Westminster City of Sculpture Festival, 2010-2012.



---

In Autumn 2011, Gudgeon's Dancing Cranes and Black Swans were selected as key sculpture installations at London's most prestigious and luxurious address, One Hyde Park. In January 2012, Search for Enlightenment was chosen for the same property, and is now situated overlooking Hyde Park and The Serpentine. His work was also shown in the Group Exhibitions, Seeking New Landscapes (March 2011) and Wild Life and Sporting Life II (July 2011), at Halcyon Gallery. Gudgeon's sculpture park in Pallington, Sculpture by the Lakes, continues to be an evolutionary environment.

Current projects include the development of a new series of kinetic sculptures. These carefully engineered sculptures are based on balance and movement, while simultaneously adjusting to the weather patterns of their potential outdoor placement. Gudgeon also continues to experiment with new patinations at the foundry.

Always challenged and excited by the extremes and dynamics of nature, Gudgeon is relentlessly innovative in the studio, aiming to 'move away from the purely representational towards something that has a deeper subtext and, as it expresses ... thoughts and emotions, is more satisfying to create'. He continues to create and develop new ideas while his work is displayed permanently

at Pallington, with the Altamira Gallery in Jackson Hole, Wyoming, Creighton Block Gallery in Montana and at Gladwell & Patterson, London.

[www.simongudgeon.com](http://www.simongudgeon.com)

[www.sculpturebythelakes.co.uk](http://www.sculpturebythelakes.co.uk)

---

# Exhibitions

## SOLO EXHIBITIONS

- 2013 Launch of Kinetics, Halcyon Gallery, London
- 2011 Permanent Sculpture Room, Halcyon Gallery, London,
- 2011 Search for Enlightenment, Halcyon Gallery, London,
- 2010 Isis: One Year On, Halcyon Gallery, London,
- 2009 Isis, Halcyon Gallery, London, New Bond St
- 2009 Isis, Halcyon Gallery, London, Bruton St

## SELECTED GROUP EXHIBITIONS

- 2015, Western Visions, National Museum of Wildlife Art, WY, USA
- 2015, Birds in Art, Leigh Yawkey Woodson Art Museum, WI, USA
- 2014, Western Visions, National Museum of Wildlife Art, WY, USA
- 2014, Birds in Art, Leigh Yawkey Woodson Art Museum, WI, USA
- 2013, Western Visions, National Museum of Wildlife Art, WY, USA
- 2013, Birds in Art, Leigh Yawkey Woodson Art Museum, WI, USA
- 2012, Western Visions, National Museum of Wildlife Art, WY, USA
- 2012, Natural Abstraction, Diehl Gallery, Jackson Hole, WY, USA
- 2012, Society of Animal Artists, Hiram Blauvelt Art Museum, USA
- 2012, Birds in Art, Leigh Yawkey Woodson Art Museum, WI, USA
- 2011, Autumn Exhibition, Halcyon Gallery, London, Bruton St
- 2011, Western Visions Celebration Salon, Diehl Gallery, Jackson Hole, WY, USA

- 2011, Birds in Art, Leigh Yawkey Woodson Art Museum, WI, USA
- 2011, Summer Exhibition, Halcyon Gallery, London, Bruton St
- 2011, Wild Life II, Halcyon Gallery, London, Harrods
- 2011, Sporting Life II, Halcyon Gallery, London, Harrods
- 2011, Seeking New Landscapes, Halcyon Gallery, London,
- 2011, Halcyon Gallery, Sculpture Trail, City of London
- 2010, Sporting Life, Halcyon Gallery, London, Bruton St
- 2010, Wild Life, Halcyon Gallery, London, Bruton St
- 2010, Birds in Art, Leigh Yawkey Woodson Art Museum, WI, USA
- 2010, Western Visions, National Museum of Wildlife Art, WY, USA
- 2010, Art and the Animal, San Diego Natural History Museum, CA, USA
- 2008, Sculpture at Halcyon, Halcyon Gallery, London, Bruton St

## PUBLIC PLACEMENTS

2015, Search for Enlightenment, Cirque du Soleil HQ  
Montreal Canada.

Present-2007, Sculpture by the Lakes, Dorset, England

2012, Isis, National Museum of Wildlife Art, Sculpture Trail,  
Jackson Hole, Wyoming, USA

2011, Search for Enlightenment, One Hyde Park, London

2011, Dancing Cranes and Black Swans, One Hyde Park,  
London

2011, Search for Enlightenment, Millbank, London

2009, Isis & the Isis Education Centre, Hyde Park, London

## COLLECTIONS

His Royal Highness The Duke of Edinburgh  
His Royal Highness The Prince of Wales  
TRH The Duke and Duchess of Cambridge  
The Duke of Bedford  
The Duke of Northumberland

## BIBLIOGRAPHY

2013	Sculpture by the Lakes book
2012	Sculpture by the Lakes Catalogue
2011	Halcyon Gallery Public Art
2011	Sculpture by the Lakes Catalogue
2010	Simon Gudgeon, Museum Shows
2010	Isis
2010	Sporting Life
2010	Wild Life
2009	Isis in Hyde Park



Simon  
Gudgeon

Tel: 07779 712298  
simongudgeon@me.com  
www.simongudgeon.com  
www.sculpturebythelakes.co.uk